

Courses up Monongahela

- S 17 E 76
- S 29 E 41
- S 22 E 67
- S 41 E 76
- 260

D 25-63

Jeremiah Riggs

N 43 E 156 P

acres 142 1/4

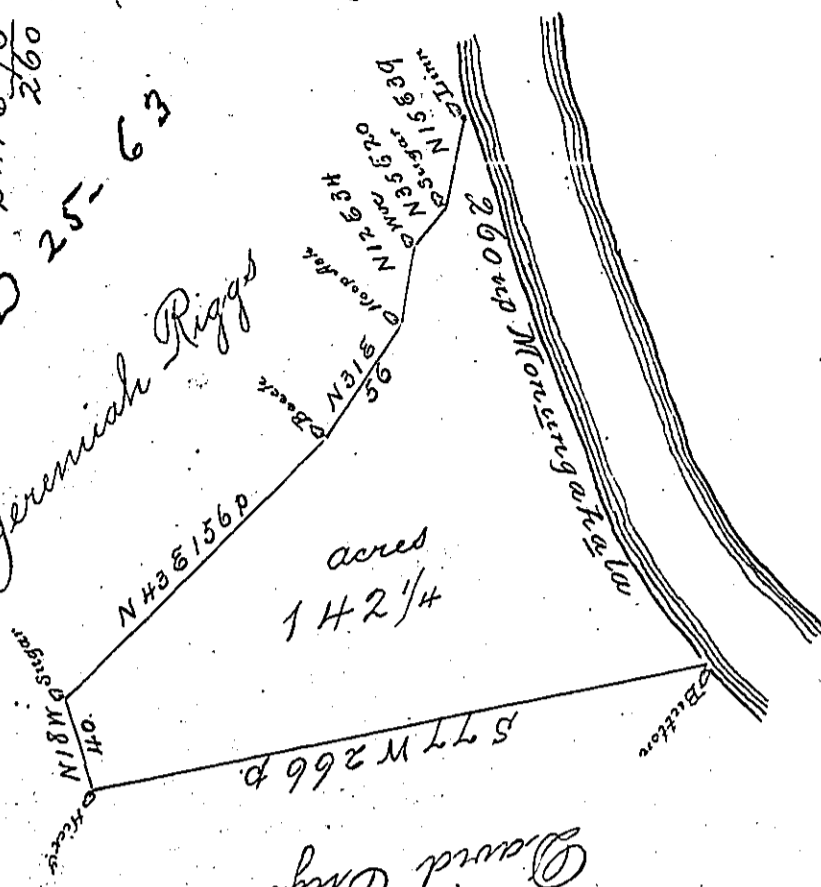
David England

S 18 N 181 N

S 77 W 266 P

C 65-3

C 81-70



The above is a Draught of a Survey made Dec^r 15th 1784 In pursuance of a Warrant Dated Aug^t 31st 1784 Called Dixons Tract Situate in Wash- ington County Containing 142 Acres & 48 p^s 1/4 Six p^{ts} Cent allow^d for roads &c

David Redick D.S

John Lukens Esq. S. G. L.

IN TESTIMONY that the above is a copy of the original remaining on file in the Department of Internal Affairs of Pennsylvania, made conformably to an Act of Assembly approved the 16th day of February, 1833, I have hereunto set my Hand and caused the Seal of said Department to be affixed at Harrisburg, this fifth day of March 1901.

James W. Lutz
Secretary of Internal Affairs.